

**EAST-MAN**

## Mobile Fuel Bowsers



We manufacture & provide complete mobile fueling equipment and bowser fabrication services.  
In compliance with PESO and Weights & Measures.

In compliance with



[www.eastmanmeters.com](http://www.eastmanmeters.com)

# WELCOME TO THE DOORSTEP DELIVERY OF FUEL!



✓ **CONSTANT  
QUALITY PRODUCTS**  
Best in class products and services  
at competitive prices.

 **DIVERSE  
INDUSTRIAL EXPERIENCE**  
Providing custom solutions  
to every industry

 **CONTINUAL  
INVESTMENT IN TECHNOLOGY**  
Full spectrum of state of the art plant  
& machinery to provide and maintain  
competitive advantage

 **HIGHEST LEVEL OF  
CUSTOMER SUPPORT**  
Empowering customers to be proactive,  
highly responsive and effectively deliver  
commitments



# What We Offer



- Chassis Selection : TATA / ASHOK LEYLAND / EICHER / Mahindra / Bharat Benz (Support in second hand chassis)
- Manufacturing Of Mobile Diesel Bowsers : 3000 Litres, 4000 Litres, 6000 Litres
- PESO Approved Digital D.U. With Micro Printer : **EAST-MAN** With Accuracy  $\pm 0.1\%$  Flow Rate 1-90 LPM
- Pumping Unit : PTO Operated **EAST-MAN** Make with inbuilt Bypass valve, Air Eliminator, Pressure Relief Valve Flow rate 1-100 LPM
- Hose Reel - Highly Robust Spring type self retractable hose reel with standard hose
- Fabrication is as per the Indian Petroleum rules 2002 with all safety features prescribed by the PESO (Petroleum and Explosives Safety Organization)
- Safety Features - All Standard fittings as per PESO standards with additional features complying to R.T.O. norms
- Auto Shut-off Nozzle
- Automation
- Geo-Fencing
- PESO And W&M liasoning

## Benefits

- Eliminate Fuel Pilferage
- Enhance Fuel Utilization
- Reduce Carbon Emissions
- Automation Ready D.U.
- Robust Quality & Cost Effective
- Industry Proven Flow Meter
- After Sales Support for Complete Bowser including (Tank, Manifold, PTO, Valves, DU), PTO Pump, Hosereel, Nozzle & Other Components By **EAST-MAN** Resident Technical Team

# Technology Driven Mobile Fuel Bowser



## Features

- Tank
- Anti Skid Deck Platform
- Gate Valves
- Hosereel
- Mud Guards /Side Guard
- Battery Cut-Off Switch
- Battery inside cabin
- Fire Screen
- Decals
- Manifold
- SS Ladder
- D.U.
- PTO Pump
- Safety Features
- PV Valves
- Fuel Tank Guard
- SS Locking Mechanism
- Safety Cone
- Inter Lock
- Emergency Valves
- Printing
- Pump Fittings
- Auto-Cut off Nozzle
- Fire Extinguisher
- Fusible Link
- Lever Box
- Suction Filter



## Specification

- Dispensing Unit – **EAST-MAN DU** (Flow rate 1–90LPM, Accuracy  $\pm 0.1\%$ )
- Automation System – AGS/Orpak
- Hose Reel – Spring loaded with 10 meter Hose
- PTO Pump – **EAST-MAN** Internal Rotary Gear Pump
- Fittings – **EAST-MAN** Pump fittings
- PTO – Suitable as per Vehicle
- Fabrication of M.S. Tank – Sheet 3.15mm thick, Mud Guard, Ladder, 3" pipe Line, 3" gate valve, diesel tank safety grill, PESO approved safety fittings, side guard fitting, Tank foundation with U-bolt fitting and valve box fitting, Module fabrication for DU cabinet and tank, cabinet with outside painting.
- Onsite service support available
- ATG (Optional)

## Typical Field Challenges

- Poor Service support for PTO related breakdowns.
- Poor Service Support for PTO Pump related breakdowns.
- Delay in problem resolution for disputed issues between automation system and dispenser pump.
- Coordination with multiple vendors for service complaints related to different components which cause delay in service complaints resolution.

## Our Value Addition

- **EAST-MAN** service team will be the first point of contact for field service support.
- Technical trained **EAST-MAN** service team for various components installed on Mobile Dispensing Unit / Mobile Bowser.
- Quality and cost effective product.
- On time delivery as per committed time lines.
- Already serving a satisfied customer base of 1000+.
- In house Dispenser & Pump manufacturing.

## Mobile Fuel Dispenser

Suitable for Fueling stationary equipment and stand alone vehicles, truck, oil stations, farms, factories, hospital, industries etc.



### FEATURES

- Accuracy  $\pm 0.1\%$ .
- Secure.
- Suspicious delivery detection.
- Non - reversible totalizer.
- Non - openable tamper proof self - destructive pulsar.
- High quality corrosion resistant powder coating.
- Low maintenance cost.
- Most trusted, time tested & industry proven meter.
- Compact and strong design.
- Vibration proof (In compliance with vibration tests).
- Fully removable front & rear door for easy maintenance.
- Highest flow rate in its competition (1-90 LPM).
- Easily accessible inlet / outlet connections.

## Internal Rotary Gear Pump

### PTO Operated

**EAST-MAN** Internal Rotary Gear Pumps are the most advanced positive displacement and self priming pumps, designed for large suction capacity as well as high pressure discharge capacity.

### FEATURES

- 1) In-built by-pass valve,
- 2) In-built pressure relief valve
- 3) Strainer
- 4) Air separator
- 5) Provision of dual outlet
- 6) PTO operated







## Hose Reel

- Spring driven requires no power
- Heavy duty steel construction
- Corrosion resistant powder coating
- Wall, ceiling or floor mounting
- Multi - Position ratchet lock
- Full Flow swivel mechanism

## Suction Filter

**EAST-MAN** Strainer is one of the basic requirement for fuel dispensing system and plays a vital role in protecting the system from premature wear.

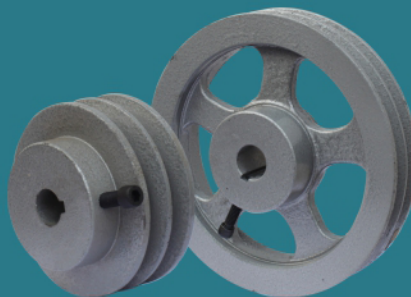
The oil stainer cleans the oil as it passes through the filter element. Preventing premature wear on instrument's internal parts.



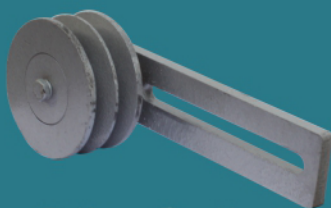
Propeller Shaft



Flanges



Pulleys



Idler Pulley



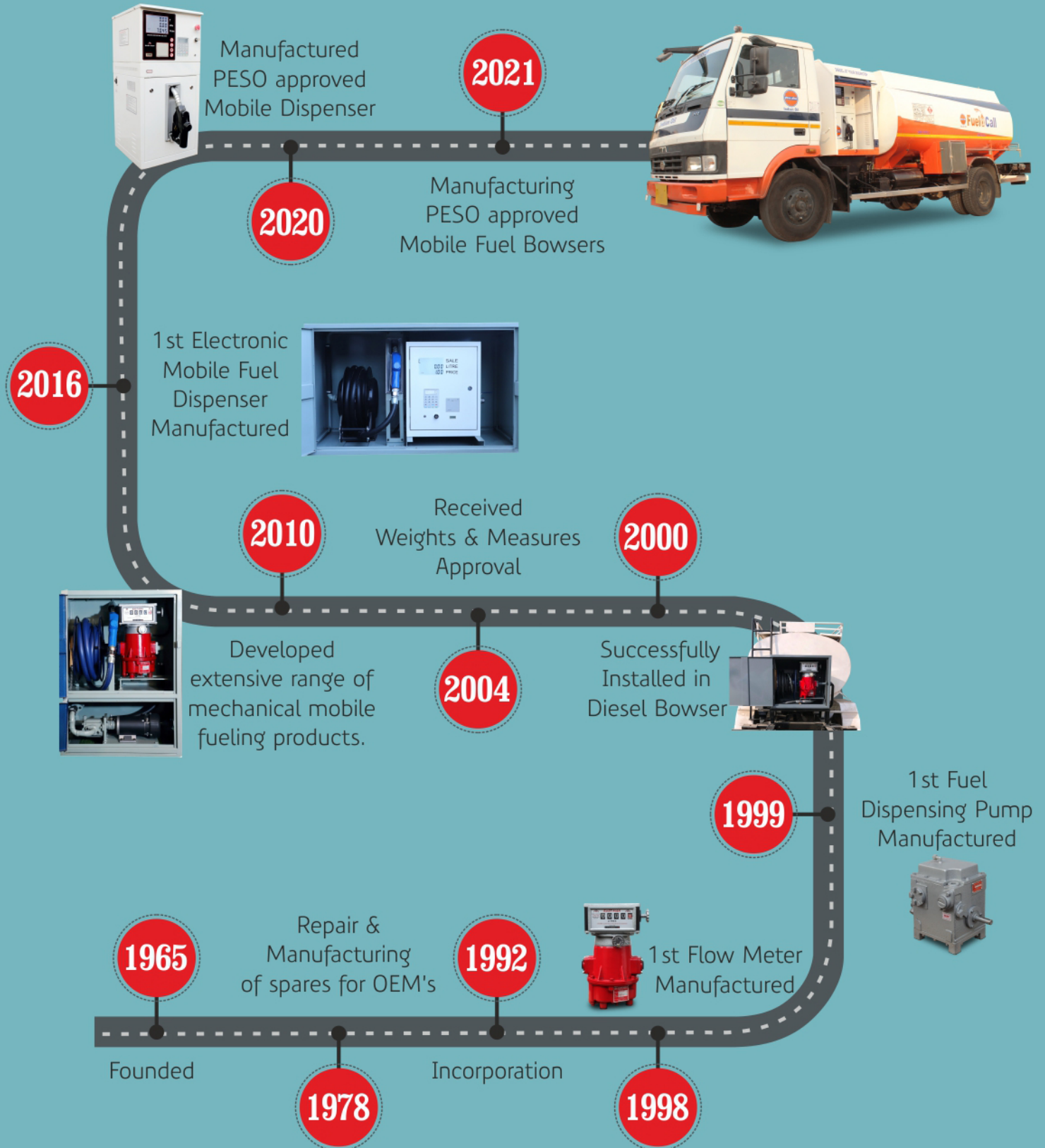
Drive Hub



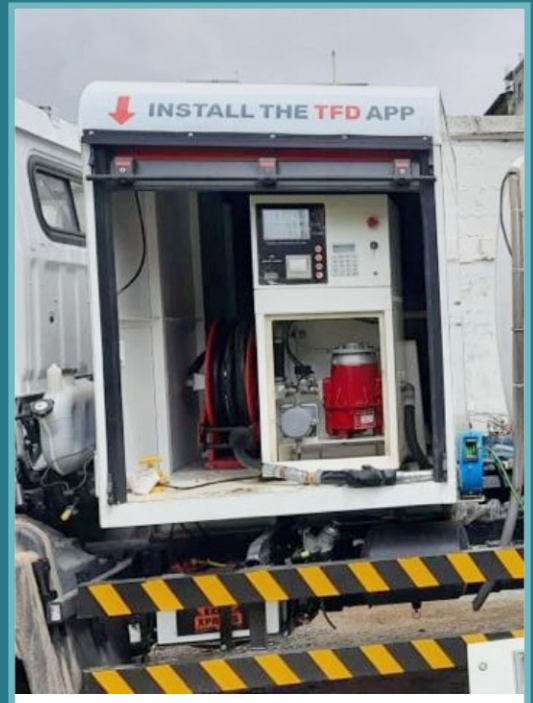
Pump Mounting Frame

# Count on our experience

Be a part of our growing journey









# WHY CHOOSE US

**100% Made in India**

**Time tested on Indian road and weather conditions**

**30+ years industry experience**

**Easily approachable**

**Immediate response**

**Fast resolution for any technical issues**

**Easy availability of spares**

**Customer satisfaction**

**Minimum down time**

**Low maintenance cost**

**One stop solution provider**

**Automation**

**Geofencing**

**Live tracking**

**Analytics**

**Fastest flow rate in its competition (upto 90LPM)**

**In compliance with W&M**

**In compliance with PESO**

**1 year warranty with on site support**

**Dedicated field technicians**

**Best in class quality**

**Cost effective**



# Industries We Serve



# Our Presence



**EAST-MAN**

Eastern Automotive Machine Tools  
Pvt. Ltd.

+91 99996 02215 +91 99532 98110,

info@eastmanmeters.com, eastmeter@yahoo.com

**Office :** 622, 6th Floor, PP Trade Centre,  
Netaji Subhash Place - Pitampura, New Delhi- 110034

**Factory :** 1242 - 1243 Modern Industrial Estate,  
Part B, Bahadurgarh - 124507, Haryana INDIA